

# *Cabinet Selection Guide*

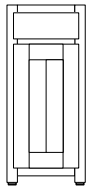


**Harbor Island**  
**OUTDOOR LIVING**

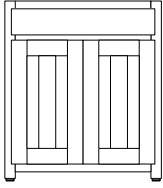
*The Signature Cabinet of Fine Outdoor Kitchens™*

Revised 6/09/10

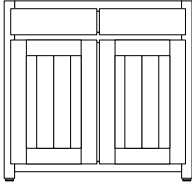
# Drawer Base Cabinets



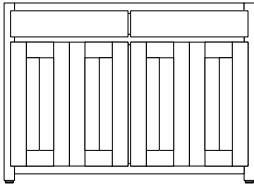
**One Door, One Drawer**  
(B\_\_ )<sup>1</sup>  
Available sizes:  
Width: 12,15,18,21,24  
Depth: 24, 30  
Height: 34-½



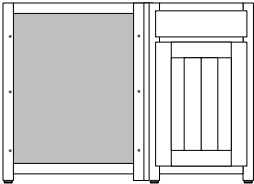
**Two Doors, One Drawer**  
(B\_\_-BD)  
Available sizes:  
Width: 24,27,30,33,36  
Depth: 24, 30  
Height: 34-½



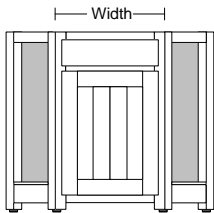
**Two Doors, Two Drawers**  
(B\_\_-2DW)  
Available sizes:  
Width: 30,33,36,39,42,45  
Depth: 24, 30  
Height: 34-½



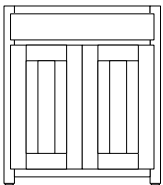
**Four Doors, Two Drawers**  
(B4D\_\_-2DW)  
Available sizes:  
Width: 45,48  
Depth: 24, 30  
Height: 34-½



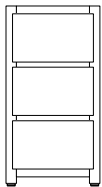
**Blind Corner, One Drawer**  
(BC\_\_ )<sup>1,2,4</sup>  
Available sizes:  
Width: 36,39,42,45,48  
Depth: 24, 30  
Height: 34-½



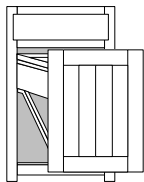
**45° Angle Corner, One Drawer**  
(BA\_\_ )  
Available sizes:  
Width: 12,15,18,21,24<sup>3</sup>  
Depth: 24, 30  
Height: 34-½



**Sink Base**  
(SB\_\_ )  
Available sizes:  
Width: 18 - 36"  
Depth: 24, 30  
Height: 34-½

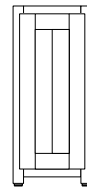


**3-Drawer Base**  
(DB\_\_ )  
Available sizes:  
Width: 12 - 30"  
Depth: 24, 30  
Height: 34-½

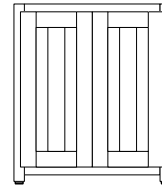


**Trash Can Pullout Base**  
**Two cans included**  
(TC21\_\_ )  
Available sizes:  
Width: 21"  
Depth: 24, 30  
Height: 34-½

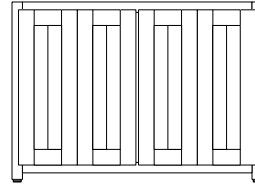
# Full-Height Door Cabinets



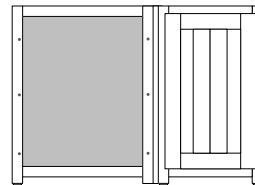
**One Door**  
(B\_\_-FH)<sup>1</sup>  
Available sizes:  
Width: 12,15,18,21,24  
Depth: 24, 30  
Height: 34-½



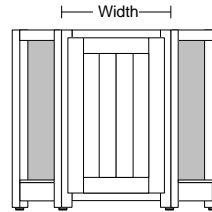
**Two Doors**  
(B\_\_-BD/FH)  
Available sizes:  
Width: 24,27,30,33,36  
39,42,45  
Depth: 24, 30  
Height: 34-½



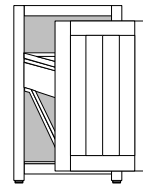
**Four Doors**  
(B4D\_\_-FH)  
Available sizes:  
Width: 45,48  
Depth: 24, 30  
Height: 34-½



**Blind Corner**  
(BC\_\_-FH)<sup>1,2,4</sup>  
Available sizes:  
Width: 36,39,42,45,48  
Depth: 24, 30  
Height: 34-½



**45° Angle Corner**  
(BA\_\_-FH)<sup>1</sup>  
Available sizes:  
Width: 12,15,18,21,24<sup>3</sup>  
Depth: 24, 30  
Height: 34-½, 36-½

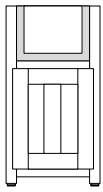


**Trash Can Pullout Base**  
**Two cans included**  
(TC21\_\_-FH)  
Available sizes:  
Width: 21"  
Depth: 24, 30  
Height: 34-½

# Notes

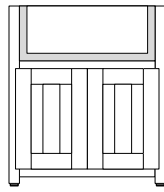
- <sup>1</sup> Specify Left or Right hinge on single door cabinets.
  - <sup>2</sup> Specify Left or Right-hand return on blind corner cabinets. Right-hand return shown in drawing.
  - <sup>3</sup> 45° Angle cabinet (24") has two doors.
  - <sup>4</sup> Specify depth of cabinet to be joined at the blind side of corner cabinet. (ie: 24" or 30")
- Standard base cabinets include one adjustable shelf.
  - Interior drawer(s) are an option for Full-height base cabinets.

# Grill / Sideburner Cabinets



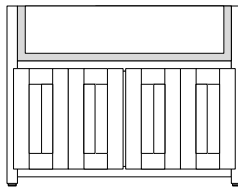
**Grill Base Single Door (G\_\_)**

Available sizes:  
Width: 18 - 24"  
Depth: 24,30  
Height: 34-½"



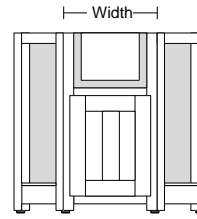
**Grill Base Dbl. Door (G\_\_-BD)**

Available sizes:  
Width: 24 - 42"  
Depth: 24,30  
Height: 34-½"



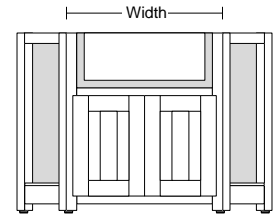
**Grill Base 4-Door (G4D\_\_)**

Available sizes:  
Width: 45 - 60"  
Depth: 24,30  
Height: 34-½"



**Grill Base 45° Angle (GA\_\_)**

Available sizes:  
Width: 18 - 24"  
Depth: 24,30  
Height: 34-½"



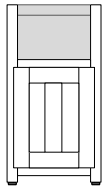
**Grill Base 45° Angle (GA\_\_-BD)**

Available sizes:  
Width: 24 - 48<sup>1</sup>  
Depth: 24,30  
Height: 34-½"

<sup>1</sup> 45" and up cabinets have 4-Doors

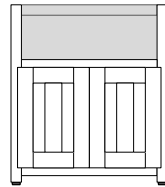
- Maximum grill cutout depth (front to rear) of 24" deep Grill base with insulation sleeve is 21-7/16".
- Actual Grill Base width = "Grill cutout width" + 6 inches
- Specify grill / sideburner manufacturer and model # to be installed in Grill Base.
- All Grill and Sideburner cabinets include a built-in insulation sleeve unless otherwise noted.
- Option: Recessed tank cradle available for 20# propane tanks. Allows better access to the propane tank shut-off valve when stored in Grill Base.

# Beverage Centers



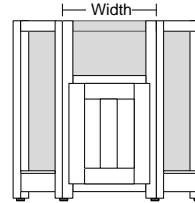
**Bev. Center Base (BEV\_\_)**

Available sizes:  
Width: 18,21,24  
Depth: 24,30  
Height: 34-½"



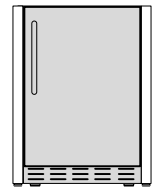
**Bev. Center Base, Two Doors (BEV\_\_-BD)**

Available sizes:  
Width: 24,27,30,33,36,39  
Depth: 24,30  
Height: 34-½"



**Bev. Center Base 45° Angle (BEVA\_\_)**

Available sizes:  
Width: 18<sup>1</sup>, 21<sup>1</sup>, 24,27,  
30,33,36  
Depth: 24,30  
Height: 34-½"



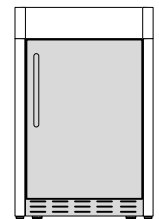
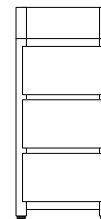
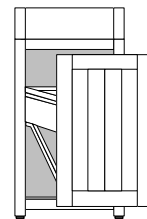
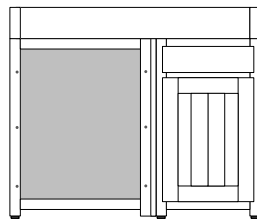
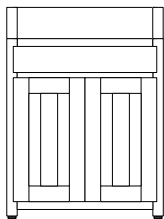
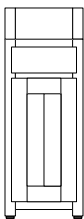
**Refrigerator/Icemaker Base (REF\_\_)**

Available sizes:  
Width: 18,27  
Depth: 24,30  
Height: 34-½"

<sup>1</sup> Single door cabinets

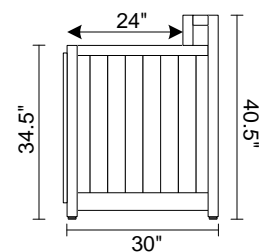
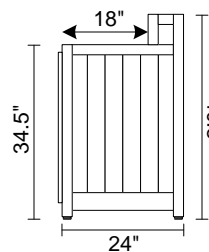
- Actual Beverage Center Base width = "Bev. Center cutout width" + 3 inches
- Refrigerator / Icemaker width = "Req'd width" + 3 inches
- Specify appliance manufacturer and model # to be installed in Beverage Center or Refrigerator Base.

# Raised Bar Cabinets

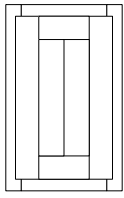


**NOTE:**

- All base cabinets are available with a raised bartop with the following exceptions:
  1. Grill / Sideburner base cabinets
  2. Any 45° Angle cabinet
- Add "RB" to the end of the cabinet part number to specify that the cabinet is to have a raised bar.

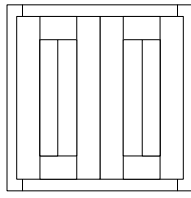


# Wall Cabinets



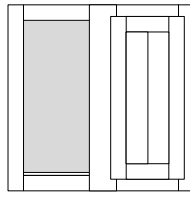
**Wall One Door (W\_)**

Available sizes:  
Width: 12,15,18,21  
Depth: 13  
Height: 18,24,30,36,42



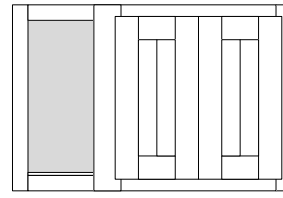
**Wall Two Doors (W\_-BD)**

Available sizes:  
Width: 24,27,30,33,36  
Depth: 13  
Height: 18,24,30,36,42



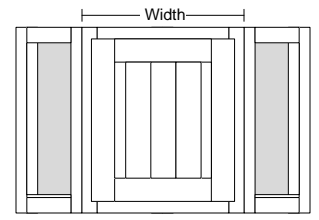
**Blind Corner Wall; One Door (WC\_)**

Available sizes:  
Width: 24,27,30,33  
Depth: 13  
Height: 18,24,30,36,42



**Blind Corner Wall Two Doors (WC\_-BD)**

Available sizes:  
Width: 36,39,42,45,48  
Depth: 13  
Height: 18,24,30,36,42

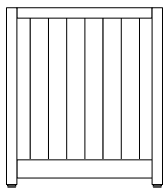


**Wall 45° Angle One Door (WA\_)**

Available sizes:  
Width: 15,18,21  
Depth: 13  
Height: 18,24,30,36,42

Notes: 18" Tall wall cabinets = no shelf  
24" Tall wall cabinets = 1 shelf  
30" Tall wall cabinets = 2 shelves  
36" and 42" Tall wall cabinets = 3 shelves

# Accessories



**Panel Only (P\_)**

Available sizes:  
Width: 12 - 48"  
Height: 34-1/2"



Includes mounting hardware

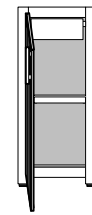
**Wall Filler Panel (WFP\_)**

Available sizes:  
Width: 3-1/2"  
Wall lengths: 18,24,30,36,42"  
Base lengths: 34-1/2"



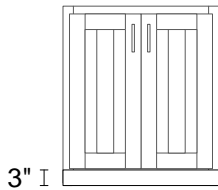
**Corner Adapter<sup>1</sup> (CA34)**

Specs:  
Width: 3-1/2" x 3-1/2"  
Wall length: 18,24,30,36,42"  
Base Length: 34"



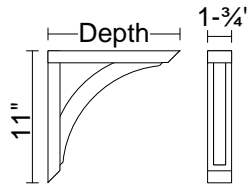
**Interior Drawer(s)<sup>2</sup>**

Add "DW" or "2DW" to cabinet part number.  
Width: Varies  
Height: 3-1/2"



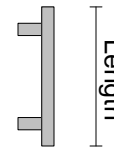
**Baseboards (BB\_)**

Available sizes:  
Thickness: 3/4"  
Width: 3"  
Length: Cut to length



**Countertop Support (CTS11)**

Specs:  
Width: 1-3/4"  
Depth: 11"  
Height: 11"



**Stainless Steel Pull (SSP146)**

Specs:  
Length: 146mm (5.75")  
Diameter: 14mm (.55")

<sup>1</sup> Used when two cabinets meet in a corner. Eliminates need for blind corner cabinet.

<sup>2</sup> Interior drawers are for use in full-height cabinets only.

# Ordering Info

• Part number identification:

Base cabinets: Example: B1830 B = Cabinet type 18 = Cabinet width 30 = Cabinet depth

Wall cabinets: Example: W2436 W = Cabinet type 24 = Cabinet width 36 = Cabinet height

Abbreviations: BD = Butt Doors DW = Drawer FH = Full Height Door RB = Raised bartop

- For single door cabinets, specify left or right hinge.
- Specify left or right-hand return on blind corner cabinets.
- Specify cabinets requiring finished side(s). All cabinets have finished rear panels.
- Depths listed are for cabinet box. Add 3/4" door thickness for total depth.
- Specifications subject to change without notice.
- For more information, please call **1-888-844-6206** or visit **www.GRILLislands.com**